



BIRD TECHNICAL

Jumat, 20 Januari 2017

IDX-Composite



IDX Composite 5,260 - 5,347

Pola *Evening Doji Star* terbentuk atas IDX mengindikasikan melambatnya kenaikan dihari Jumat.

United Tractor (UNTR)



UNTR 21625-21900 (TP 2017F:28500)

Pola *Two White Soldiers* terbentuk atas UNTR mengindikasikan *Bullish Continuation*.

BUY 21775

Telekomunikasi Indonesia (Persero) Tbk. (TLKM)



TLKM 3930-4050 (TP 2017F: 5100).

Pola *Short White Candle* terbentuk atas TLKM mengindikasikan *Bullish Reversal*.

BUY 3970

Semen Indonesia (Persero) Tbk. (SMGR)



SMGR 8475-8900 (TP 2017F:10500).

Pola *Evening Doji Star* terbentuk atas SMGR mengindikasikan munculnya aksi jual.

BOW 8700

Follow us on:



BIRDMsec



Bird Msec

Charoen Pokphand Indonesia (CPIN)



CPIN 3170-3270 (TP 2017F:4300)

Pola *Hammer* terbentuk atas CPIN mengindikasikan munculnya aksi jual.

BOW 3220

Bank Negara Indonesia (BBNI)



BBNI 5350-5550 (TP 2017F:6275)

Pola *Black Closing Marubozu* terbentuk atas BBNI mengindikasikan *Bearish Reversal*.

BOW 5425

Harum Energy Tbk (HRUM)



HRUM 2000-2180 (TP 2017F:2925)

Pola *Bearish Harami* terbentuk atas HRUM mengindikasikan *Bearish Reversal*.

BOW 2060

Pembangunan Perumahan (PTPP)



PTPP 3570-3665 (TP 2017F:5200)

Pola *Inverted Hammer* terbentuk atas PTPP mengindikasikan melambatnya aksi beli.

BUY 3600

Bank Central Asia (BBCA)



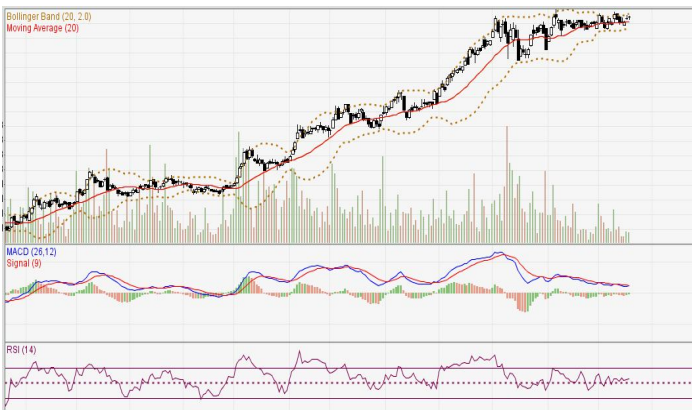
BBCA 15200-15575 (TP 2017F:16275).
 Pola *Two White Soldiers* terbentuk atas BBCA
 mengindikasikan *Bullish Continuation*.
BUY 15375

Wijaya Karya (WIKA)



WIKA 2465-2565 (TP 2017F:3670)
 Pola *Bearish Engulfing* terbentuk atas WIKA
 mengindikasikan *Bearish Reversal*.
BOW 2490

Adaro Energy (ADRO)



ADRO 1705-1755 (TP 2017F:2330)
 Pola *Dragonfly Doji* terbentuk atas ADRO
 mengindikasikan melambatnya aksi beli.
BUY 1730

Gudang Garam (GGRM)



GGRM 62975-63925 (TP 2016F:77850)
 Pola *Hammer* terbentuk atas GGRM
 mengindikasikan melambatnya aksi beli.
BUY 63400



Stocks Pick:

1. PTBA (TP 2017F:19675)*Recommendation:*

*Buy at/above 12075. Target 12125. Stoploss 12050 (Call Valid For First 3 hours)

*Buy at/above 12175. Target 12225. Stoploss 12150 (Call Valid For Full Day)

#Sell at/below 12225. Target 12150. Stoploss 12275 (Call Valid Only If High For Today is Above 12225)

#Sell at/below 12175. Target 12125. Stoploss 12200 (Call Valid Only If High For Today is Above 12225)

2. TINS (TP 2017F:1605)*Recommendation:*

*Buy at/above 1110. Target 1140. Stoploss 1095 (Call Valid For First 3 hours)

*Buy at/above 1170. Target 1200. Stoploss 1155 (Call Valid For Full Day)

#Sell at/below 1200. Target 1155. Stoploss 1220 (Call Valid Only If High For Today is Above 1200)

#Sell at/below 1165. Target 1140. Stoploss 1180 (Call Valid Only If High For Today is Above 1200)

3. AKRA (TP 2017F:7200)*Recommendation:*

#Sell at/below 6300. Target 6100 (Call Valid for First 3 hours)

#Sell at/below 5850. Target 5625 (Call Valid for full day)

*Buy at/above 5625. Target 6000 (Call Valid only if low for today is below 5625)

*Buy at/above 5875. Target 6100 (Call Valid only if low for today is below 5625)

4. ITMG (TP 2017F:21250)*Recommendation:*

*Buy at/above 15675. Target 15775. Stoploss 15625 (Call Valid For First 3 hours)

*Buy at/above 15875. Target 15950. Stoploss 15825 (Call Valid For Full Day)

#Sell at/below 15950. Target 15800. Stoploss 16025 (Call Valid Only If High For Today is Above 15950)

#Sell at/below 15850. Target 15775. Stoploss 15900 (Call Valid Only If High For Today is Above 15950)

5. PGAS (TP 2017F:3125)*Recommendation:*

*Buy at/above 2720. Target 2740. Stoploss 2710 (Call Valid For First 3 hours)

*Buy at/above 2760. Target 2780. Stoploss 2750 (Call Valid For Full Day)

#Sell at/below 2780. Target 2750. Stoploss 2800 (Call Valid Only If High For Today is Above 2780)

#Sell at/below 2760. Target 2740. Stoploss 2770 (Call Valid Only If High For Today is Above 2780)

Research

Yusuf Ade Winoto CFA, FRM yusuf.winoto@mncgroup.com	Head of Research & Institutional Business
Edwin J. Sebayang edwin.sebayang@mncsecurities.com <i>mining, energy, company groups</i>	Head of Research ext.52233
Victoria Venny victoria.setyaningrum@mncsecurities.com <i>telecommunication, tower, toll road, trading</i>	ext.52236
Gilang A. Dhiroboto gilang.dhiroboto@mncgroup.com <i>construction, property</i>	ext.52235
Yosua Zisokhi yosua.zisokhi@mncgroup.com <i>plantation, poultry, cement</i>	ext.52234
Rr. Nurulita Harwaningrum roro.harwaningrum@mncgroup.com <i>banking</i>	ext.52237
Krestanti Nugrahane Widhi krestanti.widhi@mncgroup.com <i>research associate</i>	ext.52166
Sukisnawati Puspitasari sukisnawati.sari@mncgroup.com <i>research associate</i>	ext.52380

MNC Securities

MNC Financial Center Lt 14—16
 Jl. Kebon Sirih No.21—27 Jakarta 10340
 P. 021-29803111
 F. 021-39836857

Disclaimer

This research report has been issued by PT MNC Securities. It may not be reproduced or further distributed or published, in whole or in part, for any purpose. PT MNC Securities has based this document on information obtained from sources it believes to be reliable but which it has not independently verified; PT MNC Securities makes no guarantee, representation or warranty and accepts no responsibility to liability as to its accuracy or completeness. Expression of opinion herein are those of the research department only and are subject to change without notice. This document is not and should not be construed as an offer or the solicitation of an offer to purchase or subscribe or sell any investment. PT MNC Securities and its affiliates and/or their offices, directors and employees may own or have positions in any investment mentioned herein or any investment related thereto and may from time to time add to or dispose of any such investment. PT MNC Securities and its affiliates may act as market maker or have assumed an underwriting position in the securities of companies discusses herein (or investment related thereto) and may sell them to or buy them from customers on a principal basis and may also perform or seek to perform investment banking or underwriting services for or relating to those companies.