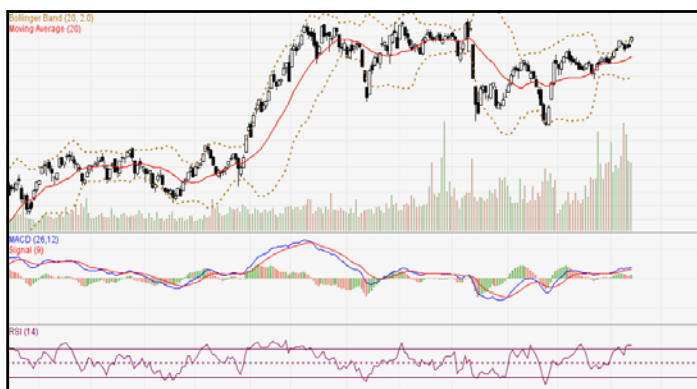


DAILY TECHNICAL

MNC Securities Research Division
Thursday, February 16, 2017



IDX-Composite



IDX Composite 5,339 - 5,425

Pola *Bearish Meeting Line* terbentuk atas IDX mengindikasikan *Bearish Reversal* dihari Kamis.

United Tractor (UNTR)



UNTR 22800-23500 (TP 2017F:28500)

Pola *Gravestone Doji* terbentuk atas UNTR.
mengindikasikan *Bearish Reversal*.
BOW 22975

Telekomunikasi Indonesia (Persero)Tbk (TLKM)



TLKM 3810-3930 (TP 2017F: 5100).

Pola *Black Opening Marubozu* terbentuk atas TLKM
mengindikasikan *Bearish Reversal*.
BOW 3850

Semen Indonesia (Persero) Tbk (SMGR)



SMGR 9025-9600 (TP 2017F:10500).

Pola *Bearish Kicking* terbentuk atas SMGR
mengindikasikan *Bearish Reversal*.
BOW 9325

Research MNC Securities
research@mncsecurities.com
(021) 2980 3111 (Hunting)

Bank Negara Indonesia Tbk (BBNI)



BBNI 6050-6400 (TP 2017F:6275)

Pola *Four Price Doji* terbentuk atas BBNI mengindikasikan munculnya aksi *profit taking*.

BOW 6250.

Pembangunan Perumahan (PTPP)



PTPP 3640-3780 (TP 2017F:5200)

Pola *Spinning Tops* terbentuk atas PTPP mengindikasikan munculnya aksi beli.

BUY 3710.

Bank Central Asia Tbk (BBCA)



BBCA 15300-15650 (TP 2017F:16275).

Pola *Homing Pigeon* terbentuk atas BBCA mengindikasikan *Bearish Reversal*.

BOW 15475

Wijaya Karya Tbk (WIKA)



WIKA 2460-2540 (TP 2017F:3670)

Pola *Bearish Sparring Line* terbentuk atas WIKA mengindikasikan *Bearish Reversal*.

BOW 2500

Charoen Pokhand Indonesia Tbk (CPIN)



CPIN 3385-3560 (TP 2017F:4300).

Pola *Bearish Harami* terbentuk atas CPIN mengindikasikan *Bearish Reversal*.

BOW 3420.

Gudang Garam Tbk (GGRM)



GGRM 61150-62150 (TP 2016F:77850)

Pola *Black Marubozu* terbentuk atas GGRM mengindikasikan *Bearish Reversal*.

BOW 61450

Stocks Pick:

1. PTBA (TP 2017F:19675)

Recommendation:

*Buy at/above 10950. Target 11025. Stoploss 10925 (Call Valid For First 3 hours)

*Buy at/above 11100. Target 11175. Stoploss 11075 (Call Valid For Full Day)

#Sell at/below 11175. Target 11050. Stoploss 11225 (Call Valid Only If High For Today is Above 11175)

#Sell at/below 11100. Target 11025. Stoploss 11150 (Call Valid Only If High For Today is Above 11175)

2. TINS (TP 2017F:1605)

Recommendation:

#Sell at/below 1070. Target 1060 (Call Valid for First 3 hours)

#Sell at/below 1045. Target 1035 (Call Valid for full day)

*Buy at/above 1035. Target 1055 (Call Valid only if low for today is below 1035)

*Buy at/above 1050. Target 1060 (Call Valid only if low for today is below 1035)

3. AKRA (TP 2017F:7200)

Recommendation:

*Buy at/above 6600. Target 6650. Stoploss 6600 (Call Valid For First 3 hours)

*Buy at/above 6700. Target 6775. Stoploss 11075 (Call Valid For Full Day)

#Sell at/below 6775. Target 6700. Stoploss 6800 (Call Valid Only If High For Today is Above 6775)

#Sell at/below 6700. Target 6650. Stoploss 6725 (Call Valid Only If High For Today is Above 6775)

4. ITMG (TP 2017F:21250)

Recommendation:

#Sell at/below 15075. Target 15000 (Call Valid for First 3 hours)

#Sell at/below 14925. Target 14850 (Call Valid for full day)

*Buy at/above 14850. Target 14975 (Call Valid only if low for today is below 14850)

*Buy at/above 14950. Target 15000 (Call Valid only if low for today is below 14850)

5. PGAS (TP 2017F:3125)

Recommendation:

*Buy at/above 2830. Target 2900. Stoploss 2800 (Call Valid For First 3 hours)

*Buy at/above 2975. Target 3040. Stoploss 2940 (Call Valid For Full Day)

#Sell at/below 3040. Target 2930. Stoploss 3095 (Call Valid Only If High For Today is Above 3040)

#Sell at/below 2965. Target 2900. Stoploss 3000 (Call Valid Only If High For Today is Above 3040)

6. JPFA (TP 2017F:1800)

Recommendation:

#Sell at/below 1900. Target 1875 (Call Valid for First 3 hours)

#Sell at/below 1840. Target 1815 (Call Valid for full day)

*Buy at/above 1815. Target 1860 (Call Valid only if low for today is below 1815)

*Buy at/above 1845. Target 1875 (Call Valid only if low for today is below 1815)

MNC SECURITIES RESEARCH TEAM

Yusuf Ade Winoto

Head of Research, Strategy, Consumer Staples
yusuf.winoto@mncgroup.com
(021) 2980 3111 ext. 52162

Edwin J. Sebayang

Head of Retail Research, Technical, Auto, Mining
edwin.sebayang@mncgroup.com
(021) 2980 3111 ext. 52233

I Made Adsaputra

Head of Fixed Income Research
imade.saputra@mncgroup.com
(021) 2980 3111 ext. 52117

Victoria Venny

Telco, Infrastructure, Logistics
victoria.nawang@mncgroup.com
(021) 2980 3111 ext. 52236

Gilang Anindito

Property, Construction
gilang.dhirobroto@mncgroup.com
(021) 2980 3111 ext. 52235

Rr. Nurulita Harwaningrum

Banking
roro.harwaningrum@mncgroup.com
(021) 2980 3111 ext. 52237

Yosua Zisokhi

Plantation, Cement, Poultry, Cigarette
yosua.zisokhi@mncgroup.com
(021) 2980 3111 ext. 52234

Krestanti Nugrahane

Research Associate
krestanti.widhi@mncgroup.com
(021) 2980 3111 ext. 52166

Sukisnawati Puspitasari

Research Associate
sukisnawati.sari@mncgroup.com
(021) 2980 3111 ext. 52380

MNC Research Investment Ratings Guidance

BUY : Share price may exceed 10% over the next 12 months

HOLD : Share price may fall within the range of +/- 10% of the next 12 months

SELL : Share price may fall by more than 10% over the next 12 months

Not Rated : Stock is not within regular research coverage

PT MNC Securities

MNC Financial Center Lt. 14 – 16
Jl. Kebon Sirih No. 21 - 27, Jakarta Pusat 10340
Telp : (021) 2980 3111
Fax : (021) 3983 6899
Call Center : 1500 899

Disclaimer

This research report has been issued by PT MNC Securities. It may not be reproduced or further distributed or published, in whole or in part, for any purpose. PT MNC Securities has based this document on information obtained from sources it believes to be reliable but which it has not independently verified; PT MNC Securities makes no guarantee, representation or warranty and accepts no responsibility to liability as to its accuracy or completeness. Expression of opinion herein are those of the research department only and are subject to change without notice. This document is not and should not be construed as an offer or the solicitation of an offer to purchase or subscribe or sell any investment. PT MNC Securities and its affiliates and/or their offices, directors and employees may own or have positions in any investment mentioned herein or any investment related thereto and may from time to time add to or dispose of any such investment. PT MNC Securities and its affiliates may act as market maker or have assumed an underwriting position in the securities of companies discussed herein (or investment related thereto) and may sell them to or buy them from customers on a principal basis and may also perform or seek to perform investment banking or underwriting services for or relating to those companies.